

Air Conditioning

Product Information

PLA-ZRP100BA : Inverter Heat Pump

R410A 4-Way Blow Ceiling Cassette System



Our wide range of Power Inverters offer customers high seasonal efficiency, advanced control options and quiet operation, whilst providing greater flexibility and ease of installation.

FEATURES



INDOOR

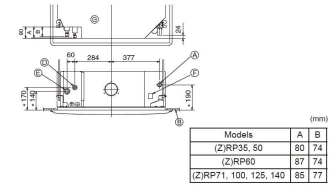
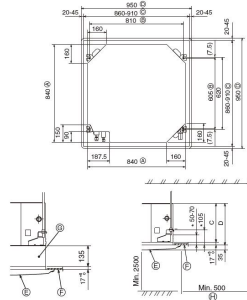
Heating Capacity (kW) (nominal)	11.2 (4.5 - 14)
Cooling Capacity (kW) (nominal)	10 (4.9 - 11.4)
Heating Capacity (kW) (UK)	9.5 (3.85 - 11.9)
Cooling Capacity (kW) (UK)	9.2 (4.5 - 10.5)
SHF (nominal and UK)	0.74
COP / EER (nominal)	4.29 / 3.85
SCOP / SEER	4.6 / 6.4
Energy Efficiency Class - Heating / Cooling	A++ / A++
Pipe Size Gas (mm [in])	15.88 (5/8")
Pipe Size Liquid (mm [in])	9.52 (3/8")
Airflow (m³/min) Lo-Mi-Mi2-Hi	20 - 23 - 26 - 30
Sound Pressure Level (dBA) Lo-Mi-Mi2-Hi	32 - 34 - 37-40
Sound Power Level (dBA) Cooling	65
Dimensions (mm) Width x Depth x Height	840(950) x 840(950) x 298(35)
Weight (kg) Unit / grille	26 / 6
Electrical Supply	FED BY OUTDOOR UNIT
Phase	SINGLE
Fuse Rating (BS88) - HRC (A)	6
Interconnecting Cable No. Cores	4

OUTDOOR

Sound Pressure Level (dBA) Heating / Cooling	51 / 49
Sound Power Level (dBA) Cooling	69
Weight (kg)	124
Dimensions (mm) Width x Depth x Height	1050 x 330+30 x 1338
Electrical Supply	380-415V,50HZ
Phase	THREE
System Power Input (kW) - Heating / Cooling (nominal)	2.61 / 2.60
System Power Input (kW) - Heating / Cooling (UK)	2.32 / 2.21
Starting Current (A)	4
System Running Current (A) [MAX] - Heating / Cooling	4.82 / 4.84 [8.7]
Fuse Rating (BS88) - HRC (A)	16
Mains Cable No. Cores	5
Max Pipe Length (m)	75
Max Height Difference (m)	30
Charge R410A (kg) - Pre charged length (m)	5 - 30

DIMENSIONS

PLA-ZRP100BA



- ① Outer side of main unit
- ② Bolt pitch
- ③ Ceiling opening
- ④ Outer side of Grille
- ⑤ Grille
- ⑥ Ceiling
- ⑦ Multi function casement (option)
- ⑧ Entire periphery

*Note that the space between ceiling panel of the unit and ceiling slab, etc. must be 10 to 15 mm.
* When the optional multi-functional casement is installed, add 135 mm to the dimensions marked on the figure.

Models	C	D
PLA-RP35/50/80/71/BA(2) PLA-ZRP35/50/80/BA	241	258
PLA-RP100/125/140/BA(2) PLA-RP100BA3 PLA-ZRP11/100/125/140BA	281	288

DIMENSIONS

PUHZ-ZRP100YKA

